

kloeckner metals

UK

ORGANICALLY COATED STEELS

ENTRUSTED TO DELIVER METAL SOLUTIONS



ORGANICALLY COATED STEELS

We offer an unrivalled range of pre-painted and specialist metallic coated steels through our specialist business unit Organically Coated Steels (OCS). Our products include; Pre-Metallic Organically Coated Steels which include Plastisol Leathergrain, Smooth and Textured internal/external Polyesters, Laminates including Foodsafe and Wood Grain effects as well as Aluzinc, Magnelis and Galvanised Steel.



BS EN 1090

ISO
9001



ISO
14001

IATF
16949



ISO
45001

ORGANICALLY COATED STEELS

Our central location in Kidderminster allows us to distribute materials throughout the UK, Ireland and Europe quickly and efficiently. With full ISO 9001 accreditation and a focus on service, OCS prides itself on a high standard of quality and exceeding customer expectations.

Our dedicated and experienced team can offer expert guidance on the selection of the correct product for your application ensuring it meets your requirements. We offer de-coiling, slitting and blanking in Carbon and Coated Steels in gauges 0.4mm > 3.0mm;

- Blanking and edge trimming process requires both cutting to length and slitting to width to obtain a finished product where close tolerances are specified for finished sizes
- Slitting process for pre-painted, Aluzinc and Coated Steel requires wide coil to be reduced to narrow width coils where close tolerances are required
- Re-coiling process for pre-painted, Aluzinc and Coated Steels enables large coils to be reduced in weight suitable for customers own machine capabilities

Protective film application for pre-painted (and some Coated Products) – a strippable film can be applied to the top surface of the material to protect the product during the customer's manufacturing process which can then be removed. We also offer a strippable film which enables customers to laser cut pre-painted steel.

CAPABILITIES	Pre-painted, Aluzinc & Coated Steel	Coated & Carbon Steel
Master coil weight	2000kg > 14000kg	4000kg > 14000kg
Master coil width	700mm > 1600mm	900mm > 1830mm
Thickness / gauge	0.4mm > 1.5mm	0.8mm > 3mm
Lengths	400mm > 4000mm	500mm > 5000mm
Length tolerance standard	- 0 + 6mm	- 0 + 6mm
Length tolerance special	- / + 1mm	- / + 1mm
Finished pack weight	500kg > 5000kg	500kg > 5000kg

IN-HOUSE SERVICES

OCS offer the following:

- Supply chain management
- Material processing - de-coiling, slitting & re-coiling
- Full certification & material traceability
- Technical advice and support
- Logistics

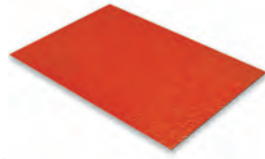
ePROCUREMENT - STAY IN TOUCH & UP TO DATE

We offer a wide range of digital solutions, such as Online Shop, Punchout or EDI, with an aim to ease your daily business and improve your performance. Benefits include:

- Order products online 24/7
- Review & accept quotes online
- Preview product stock & availability
- Test certificates
- Live order updates
- Increased efficiency by reducing errors, cost and time

For more information please visit shop.kloeckner.co.uk

Plastisol Leathergrain



Plastisol is a 200-micron PVC paint system on a hot-dipped Galvanised Steel substrate with a leathergrain emboss. The product is available in an extensive range of colours, is extremely versatile and can be utilised in a wide variety of applications.

Gauges: 0.5mm – 1.5mm

Benefits

- Very good corrosion resistance
- Excellent abrasion resistance
- Internal & external applications
- Wide range of colours and gauges ex-stock
- Very good formability

Applications

- Heating & ventilation
- Garage & industrial doors
- Portable accommodation
- Construction cladding & flashings

Laminates



The most common laminated steel products are "White Foodsafe" laminate and "Wood Grain-effect" laminate. However a wide array of coatings are available to suit colour and specification of the end application.

Gauges: 0.4mm – 1.2mm

Benefits

- Strength of steel with the appearance of wood
- Suitable for internal & external applications
- Good formability

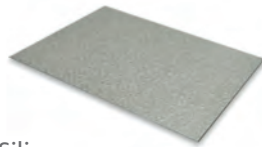
Applications (Foodsafe)

- Food preparation areas
- Hospitals & mortuaries
- Clean rooms
- Cold stores

Applications (Wood Grain)

- Garage doors
- Roller shutter doors
- Display cabinets & shelving
- Lifts
- Garden sheds

Aluzinc



Aluzinc, Aluminium and Zinc alloy – Aluminium (55%), Zinc (43.4%) and Silicon (1.6%), is a cold-rolled Galvanised Steel. Aluzinc has excellent corrosion resistance in most atmospheric conditions. This is achieved through the combination of sacrificial protection of the Zinc, and the barrier protection of the Aluminium. The product is also known as Zinalume and Galvalume.

Coating weights: 150g & 185g

Gauges: 0.4mm - 2.0mm

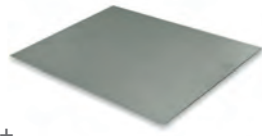
Benefits

- Excellent corrosion resistance
- Available with 'clear anti-finger print sealant'
- Up to 20 year-performance warranty
- Formable
- Weldable
- Paintable
- RoHS compliant

Applications

- Petrochemical industry
- Construction, roofing & flashings
- Outdoor sheds
- Electrical enclosures & computer cabinets
- Industrial doors
- Fences
- Insulation
- HEVAC units

Magnelis®

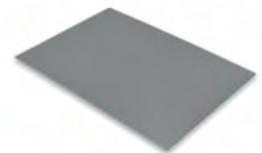


Magnelis® is an alloy composed of Zinc + Aluminium (3.5%) and Magnesium (3%), resulting in a product with excellent corrosion resistance properties. The product protects exposed cut edges with a thin zinc-based protective film with magnesium, which prevents corrosive reactions. Magnelis® has a similar appearance to Galvanised Steel, but is up to 3 times more corrosion resistant. Magnelis® has a better formability than Galvanised Steel and shows less undercreep than Galvanised Steel when the post painted surface is scratched.

Coating weights: 90g – 310g

Gauges: 0.5mm - 6.0mm

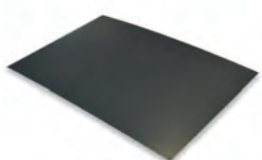
Estetic® & Granite® Tex



Estetic® Tex (internal) and Granite® Tex (external) are 35 micron textured Polyester coated steel products. The coating formulation provides high aesthetic quality (appearance and gloss) and is developed to meet the requirements of the W.E.E.E. and RoHS European directives.

Gauges: 0.4mm – 2.0 mm

Granite® HDX



Granite® HDX is a high quality pre-painted steel product ideally suited for buildings where high levels of durability and colour stability are needed in extreme environments. The grained texture gives it an excellent surface hardness for handling and processing.

Gauges: 0.4mm – 2.0 mm

Trademark References

Magnelis®, Granite® and Estetic® are brands belonging to ArcelorMittal

Benefits

- Excellent corrosion resistance
- RoHS compliant
- Paintable
- Formable
- Weldable

Applications

- Door manufacture
- Ducting / spiral tubing
- Agricultural application
- Steel sheds
- Silos
- External gutters

Benefits

- Very good surface hardness
- Wide range of colours & gauges
- Free from heavy metals & hexavalent chromium
- RoHS compliant
- Good formability

Applications

- Heating & ventilation units
- Architectural internal & external applications
- Vending machines
- Office furniture
- Domestic boilers

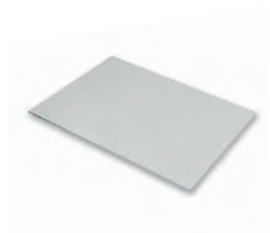
Benefits

- Excellent corrosion resistance
- Excellent UV stability
- Excellent scratch resistance
- Free from heavy metals & hexavalent chromium
- RoHS compliant
- Excellent formability
- Guarantee up to 35 years

Applications

- Sandwich panels for roof cladding
- Excellent for both internal & external architectural designs
- Architectural buildings

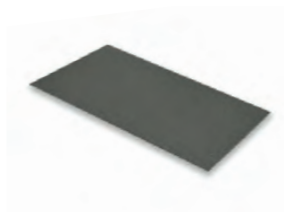
Colorcoat® PE 15 By Tata Steel



Colorcoat® PE 15 is a 15µm pre-finished steel for internal applications. It provides an efficient and durable interior product for normal, dry, controlled and unpolluted environments.

Gauges: 0.5mm - 0.7mm

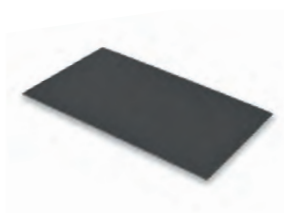
Colorcoat Prisma® By Tata Steel



3 layer Colorcoat Prisma® utilises cutting-edge clear coat technology to provide an optimised pre-finished steel product that provides enhanced aesthetics, long term performance and durability. Colorcoat Prisma® uses the optimised Galvalloy® metallic coating for ultimate corrosion resistance and cut edge protection.

Gauges: 0.7mm - 1.5mm

Colorcoat HPS200 ultra® By Tata Steel



Designed to withstand even the most demanding and aggressive environments, Colorcoat HPS200 Ultra® pre-finished steel provides super durability and corrosion resistance. Available with the Confidex® Guarantee for up to 40 years upon registration for the weatherside of industrial and commercial buildings with no inspection or maintenance to maintain its validity.

Gauges: 0.5mm - 1.5mm

Trademark References

Colorcoat®, Colorcoat Prisma®, Colorcoat HPS200 Ultra®, Confidex® and Galvalloy® are trademarks of Tata Steel.

Benefits

- Excellent formability
- Fully REACH compliant & free of chromates

Applications

- Interior roof and wall liner trays
- Sandwich panels

Benefits

- Revolutionary 3 layer technology providing enhanced aesthetics
- Confidex® Guarantee for up to 40 years upon registration
- Fully REACH compliant & free of chromates including hexavalent chrome
- Made in the UK. Certified to BES 6001 Responsible Sourcing Standard
- Reverse side branding making traceability easy

Applications

- Rainscreen applications
- Roof & wall cladding
- Composite panels
- Flashings

Benefits

- BBA certified for durability in excess of 40 years
- Fully REACH compliant & free of chromates including hexavalent Chrome
- Exceeds requirements of CPI5 as per EN 10169:2010 demonstrating excellent barrier properties when used internally
- Made in the UK. Certified to BES 6001 Responsible Sourcing Standard

Applications

- Conventional building envelope namely roof & wall cladding
- Sectional roller shutter doors
- Composite panels
- Flashings

Cor-ten®



Cor-ten® is a high strength, low alloy, weldable structural steel possessing excellent weathering resistance. It may be used to advantage in painted and unpainted condition. The steel owes its weathering resistance to the formation of a protective oxide coating which seals the surface against itself to give continuity of protection and appearance.

Gauges: 0.8mm - 40mm

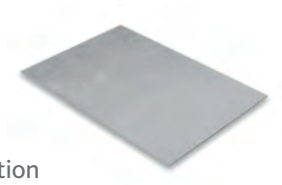
Benefits

- Develops its own protective film which slows the rate of corrosion
- Saves the cost of initial painting & the maintenance costs of repainting
- Gives corrosion protection to damaged unpainted areas

Applications

- Architectural buildings
- Chimney linings
- Ideal for use in heavy duty structures
- Log burners

Galvanised Steel



Galvanised Steel provides total protection in every millimetre increasing the prevention of rusting and corrosion. The Zinc coating from the hot dipped galvanising process is smooth and free from imperfections, thus providing complete protection of the underlying Cold Rolled Steel. Hot Dipped Galvanised Steel is generally lower in cost than many other commonly specified protective coatings for steel.

Gauges: 0.5mm – 3.0mm

Benefits

- Superior resistance to abrasion and water due to the hot dipped galvanising process
- Available in various forming & structural grades

Applications

- Canopies
- Planters
- Ductwork
- Fences
- Sectional roller shutter doors
- Roofing

Electro Zinc



The uniform surface of the Electro Galvanised Steel sheet offers an excellent substrate for high quality painting. Electro Zinc also offers excellent weldability.

Gauges: 0.9mm – 3.0mm

Benefits

- Excellent corrosion resistance for protecting in transit, in storage during the production process & for finished products
- Perfect choice for powder coating ensuring long life & an excellent finish
- Suitable for industrial & domestic appliances
- Excellent weldability, due to the uniformity and regularity of the Zinc coating

Applications

- Domestic appliances
- Air conditioners
- Electrical cabinets
- Security doors

Kloeckner Metals UK | Organically Coated Steels

Edwin Avenue, Hoo Farm Industrial Estate,
Kidderminster, DY11 7RA

t: 01562 821 400

e: ocs@kloeckner.com

www.kloecknermetalsuk.com

shop.kloeckner.co.uk

 @KloecknerUK

 Kloeckner Metals UK

 Kloeckner Metals UK

