

Carbon Steel Butt Weld Fittings

ANSI B16.9
Fittings ends bevelled

SPECIFICATION

Grade: ASTM 420 GR WPL6

Surface finish: Mill protective varnish

Mechanical Properties

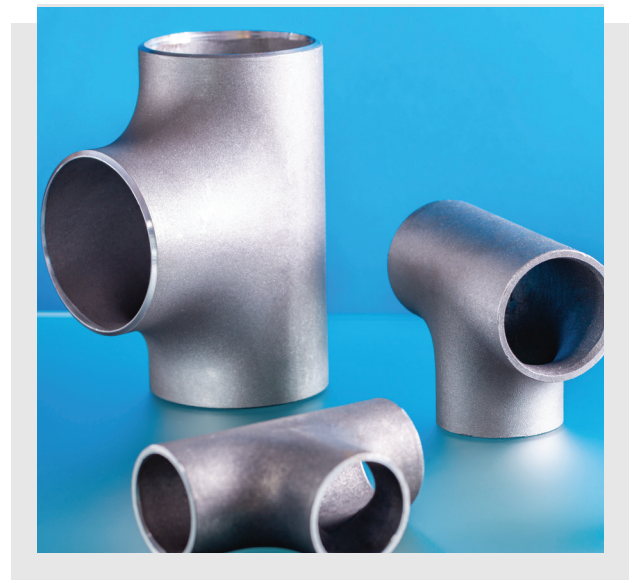
Minimum Tensile Strength	415 MPa	60000 PSI
Minimum Yield Strength	240 MPa	35000 PSI

Chemical Composition % (max unless otherwise stated)

	Carbon	Manganese	Phosphorus	Sulphur	Silicon	Copper	Chromium	Molybdenum	Nickel	Vanadium	Niobium
Min	0.30	0.50	0.035	0.040	0.15	0.40	0.30	0.12	0.40	0.08	0.002
Max	-	1.35	-	-	0.40	-	-	-	-	-	-

Typical Applications

High pressure conveyance fittings for oil, gas & petrochemicals at low temperatures.



Kloekner Metals UK | Head Office
Valley Farm Road, Stourton, Leeds,
West Yorkshire, LS10 1SD
www.kloeknermetalsuk.com

t: 0113 254 0711
e: enquiries@kloekner.com
shop.kloekner.co.uk



@KloeknerUK



Kloekner Metals UK



Kloekner Metals UK